

APEXSQL

Log



ApexSQL Log

for SQL Server 2000 and 2005

The Industry Standard for SQL Database Log Reading and Recovery

Data Sheet

ApexSQL Log is the Industry leading Transaction Log Analysis and Data Recovery tool for Microsoft SQL Server 2000 and 2005. Track the source of any data changes including **NT user**, **Computer** and **Application**. Selectively **recover** lost or modified data from drop table, truncate, delete or update operations. **Export** transactional data for review/analysis in either GUI or Command Line Interface (unattended) mode. ApexSQL Log's powerful capabilities have been extended to **SQL Server 2005** and **64 bit OS**, underscoring its position as the leading product in the SQL Server Log Reading and Recovery space.

"P.S. From what I've seen so far with the program, I can honestly say it's a great tool and the layout of the user interface is excellent. Often I find I won't use a program if the interface is either confusing, cluttered or just plain ugly, even if it's the best exponent of what it's designed to do. No such problems with the ApexSQL Log! :)"

*M. Holman
Computer Programmer
Black Stump Group*

"We purchased the ApexSQL Log Tool approximately four months ago as an insurance policy against accidental SQL data deletion, etc . . . I am very pleased to say that the ApexSQL Log Tool has exceeded our expectations and I now consider it a necessity when working with SQL databases . . . Thanks for making such a great product . . ."

*David O'Keefe
Analyst/Programmer
Fimat Australia*

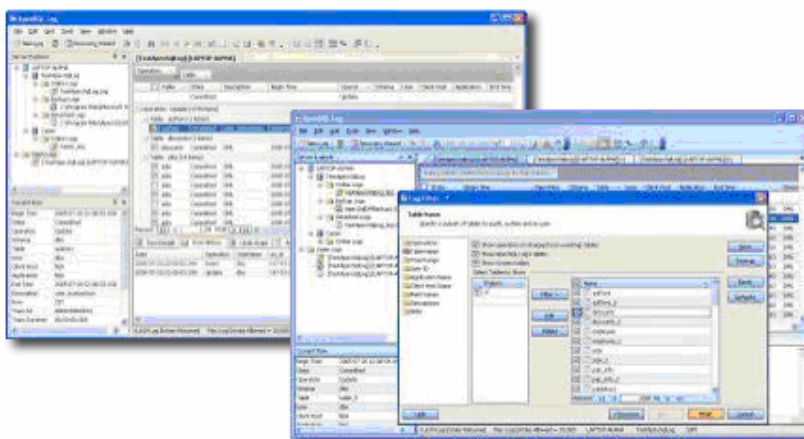
"...your product has been working perfectly and the guys in compliance and audit are happy."

*Craig Hatley
Director of Operations
Iatric Systems, Inc.*



Use ApexSQL Log to:

- Recover accidentally truncated, deleted or modified data with or without a backup.
- Recover data from un-attachable/corrupted database files.
- Undo data from Drop Table, Truncate Table and Delete operations.
- Recover Dropped tables.
- Analyze row history for historical changes.
- Generate UNDO and REDO scripts to undo or script historical transactions.
- Export transaction data in XML, BULK SQL and other formats for reporting/analysis.
- Selectively recover data without a recent database backup.



ApexSQL LLC
50101 Governors Dr.,
Suite 200
Chapel Hill, NC 27517 USA

1-866-665-5500
1-919-968-8444
sales@apexsql.com
www.apexsql.com

 **ApexSQL**
SQL Developer Essentials



Recover data from a variety of available media

With ApexSQL Log you can choose to recover data and database objects not only from the online database and transaction log files, but also from log backups and from detached log files. When disaster strikes, you can even use ApexSQL Log to try to recover as much data as possible from un-attachable/corrupted database files.

Full SQL Server 2005 support!

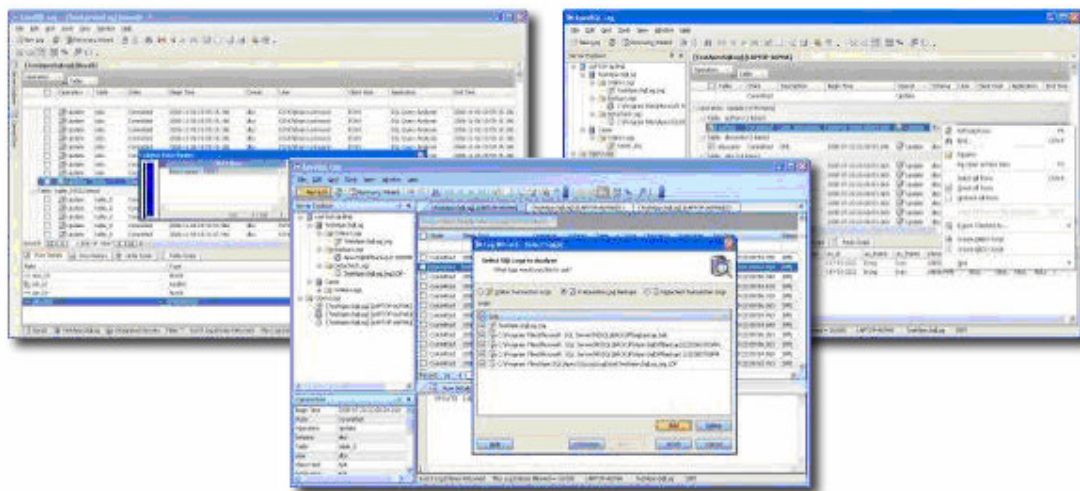
ApexSQL Log is the only Log analysis and data recovery tool that fully supports SQL Server 2005 and 64 bit Operating systems.

Log analysis and Data Recovery via Wizard based UI or Command Line Interface

ApexSQL Log offers a sophisticated Office 2003 style Wizard based interface to allow you to easily walk through the steps of recovering data and database objects. You can also run ApexSQL Log unattended via a powerful **Command Line Interface**.

Selectively decide what to recover

ApexSQL Log allows you to undo the effects of single or multiple transactions. Alternatively you can choose to undo a single statement within a transaction spanning multiple rows.



ApexSQL Log's Key Features

- Data Recovery from log files and database files, even if they are corrupted.
- Full SQL Server 2005 and 64 bit support.
- Small footprint with no negative impact on performance. No triggers are used.
- Export transactions to BULK SQL, CSV, XML or SQL for analysis/reporting.
- Powerful **Command Line Interface** with scores of switches to allow for unattended auditing.
- Ability to use several log sources: the online logs, backed up logs or detached log files.
- Complete granularity - Undo/Redo a single statement or multiple complete transactions.
- Connection monitor tracks Windows/NT user login information.
- Audit trail includes the Computer and Application from which the transaction originated.