

# Log Explorer 3.0

Transaction analysis, auditing, and data recovery for SQL Server™

**E**nsuring the availability, integrity and security of your corporate data is **critical — yet no trivial task.** To meet this challenge you need to be able to quickly resolve user and application errors – the most common source of database problems. To solve them quickly and easily you need to view and analyze changes to data, and identify who made them. And you need to know who made what changes to schemas and permissions. Finally, you need to quickly and easily recover lost data without the headaches of restoring from back-ups. The only way to meet this challenge is to use the information “hidden” in the transaction log. Enter Log Explorer.

## Log Explorer 3.0 for Microsoft SQL Server™

- IDENTIFY THE SOURCE OF ANY DATA, SCHEMA OR PERMISSIONS CHANGE
- ANALYZE YOUR DATABASE WITH COMPLETE ACCESS TO THE TRANSACTION LOG
- USE POWERFUL FILTERS TO QUICKLY FIND AND SOLVE USER AND APPLICATION ERRORS
- AUDIT WITHOUT THE OVERHEAD OF TRIGGERS
- RECOVER A SINGLE ROW OR AN ENTIRE TABLE WHILE YOUR DATABASE REMAINS ONLINE

### Secure Your Data and Protect Your Database

Knowing when changes have been made to data, and to your database structure, is critical to the security of your database. You need to know what changes were made, and by whom. Discover who granted inappropriate access to critical information, and when this was done. Or identify that a developer has inadvertently modified table structure. With the ability to view DDL commands you can identify or rollback schema and permission changes.

### Analyze Your Database

Log Explorer provides a complete record of all database changes, making it easy for you to quickly find and resolve sometimes elusive problems. Powerful filters let you find the relevant transactions.

### Audit Without Triggers

With complete access to the transaction log, Log Explorer provides the unprecedented ability to monitor database activity. You can export filtered transaction data to a SQL table to build audit reports. And a real-time monitor gives you a continuous view of data changes. Best of all, Log Explorer adds no overhead – no triggers, no extra files, and no run-time processing.

### Recover Data Fast & Online

Restoring a database from backups is painful – and transactions after the point of error are lost. Log Explorer offers selective, on-line data recovery for fields, rows, or entire tables. Undo a single transaction, salvage data from dropped tables, or roll an entire database back to a previous point in time – while your database remains on-line.

# Log Explorer's analysis and recovery capabilities

lead to higher data integrity, and database availability and security.

Analyze performance and throughput

Solve "whodunnit" problems

Monitor changes in real time

View how your rows change over time

Identify or rollback schema and permission changes

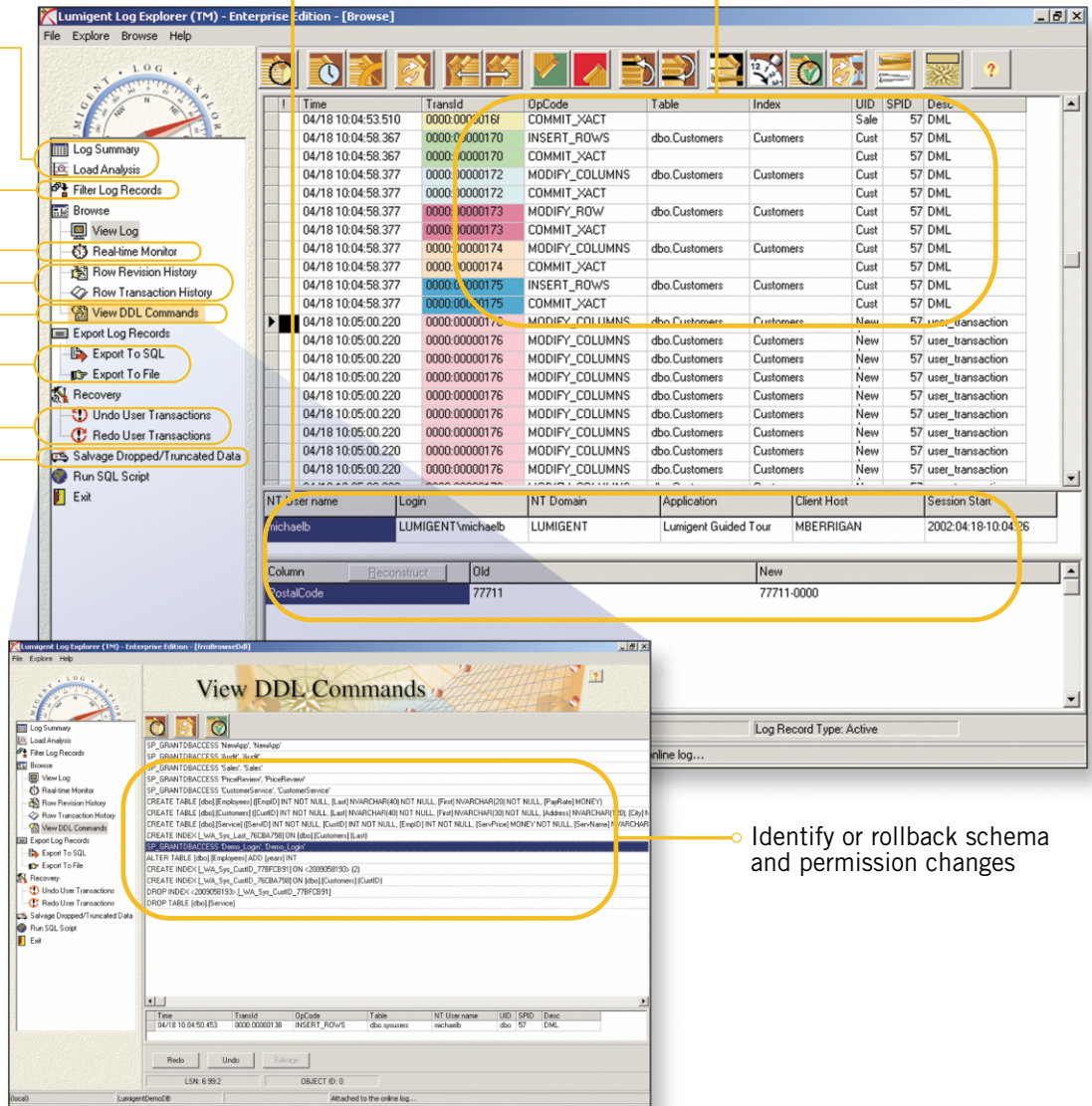
Export log data for reports and analysis

Selectively back out changes without reloading full backups

Automate recovery of dropped or truncated tables

Review details of every transaction including Windows username and application

Understand the detailed interactions between application and database



Identify or rollback schema and permission changes

- ○ ○ Use Log Explorer to audit database activity without the overhead of triggers, solve application or user problems, identify or rollback schema and permission changes, and selectively recover rows and tables online. Log Explorer is your partner to address improved database availability and security.

## FREE TRIAL

Download your free trial and start with our Guided Tour which shows you some of the most valuable features of Log Explorer.

Visit us today at [www.lumigent.com](http://www.lumigent.com) and download a free trial.



**Lumigent Technologies, Inc.**  
 289 Great Road  
 Acton MA 01720  
 Toll Free 1-866-LUMIGENT  
 Phone 1-978-206-3700  
 E-mail [sales@lumigent.com](mailto:sales@lumigent.com)

**Lumigent Technologies**  
 Safeguarding the availability and integrity of corporate data.