

Print Queue Manager

Now You Can Manage All Of Your Network Printers From One Window — True Centralized Control !

With its exclusive APM™ (Automatic Print Management) technology, Print Queue Manager gives administrators the power to move jobs between printers, eliminate printer downtime and identify printing bottlenecks anywhere on the network.

Print Queue Manager's wealth of management features eliminates the need for administrators to walk to a remote server to administer their printers or solve common printer problems. It's no longer necessary to install printers locally and view each queue in a separate window. All network printers can be managed from a single window! And, with Print Queue Manager's Print Folders, common tasks that used to take hours can now be done with the click of a button.

Now, finally — true centralized control of all printing activity on a network of Windows NT/2000 Servers and Windows NT/2000, Windows 3.1, Windows 95/98, Unix, OS/2 or Apple Macintosh Workstations.

Designed as the best of breed printer management solution, Print Queue Manager handles from a few printers to thousands of printers spread across an entire enterprise network. It is *THE* solution for your Windows NT/2000 network.

Print Queue Manager gives you the power to:

- *Move or copy jobs between printers
- *Redirect and load-balance jobs based on criteria you control
- *Notify users of redirected jobs
- *Control multiple printers with the click of a button.
- *Arrange printers into logical groups, allowing you to perform actions on groups of printers that you select.
- *Colorize printers based on criteria you select. Such as “Printers with error show up in red.”

*Sort printers based on criteria you select. Such as “Order printers by document count”, so the busiest printers show up on top.

*View print jobs from multiple printers, all in one view.

*Make copies of existing printers with the click of a button.

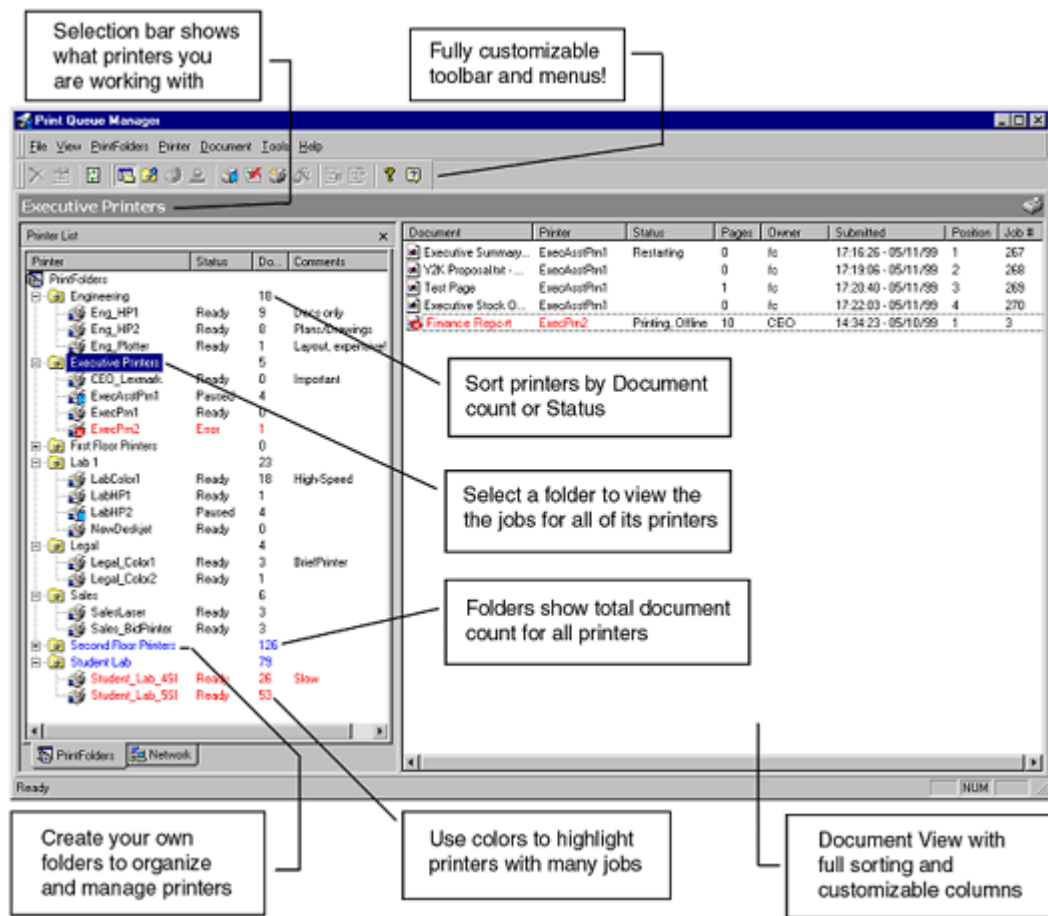
*Automatically add locate and track printers in a domain, or even in an entire network.

Print Queue Manager Components

Print Queue Manager consists of two components, the client component which is a Windows NT/2000 application that runs on any Windows NT/2000 Server or Workstation on your network. The server component runs on any Windows NT/2000 server that hosts printers. The server component enables the Automated Printer Management (APM) features.

Printer List and Document View

The main Print Queue Manager window is comprised of two main elements; the “Printer List” on the left, and the “Document View” on the right.

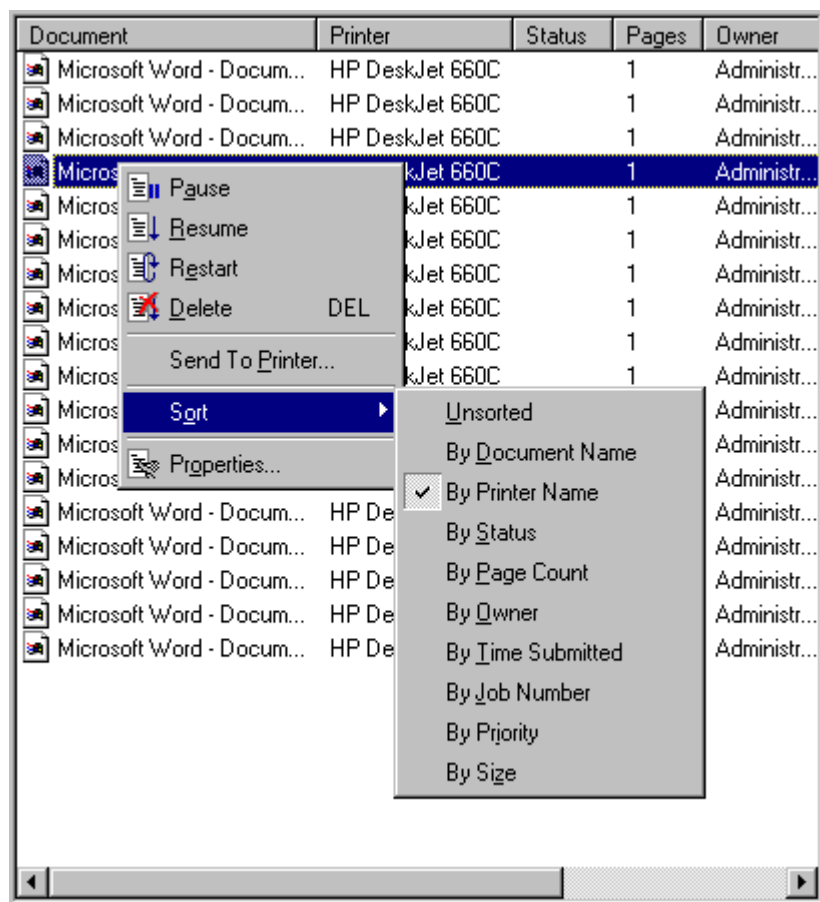


Printer List

The Printer List is used for the selection and management of printers. There are two different modes which you can use to select printers, either the through the PrintFolders tab, or through the Network tab.

The PrintFolders tab allows you to organize your printers into logical groups or “folders” for easier management and display. You can easily view all jobs at one time for a group of printers.

Printers can be sorted by their name, document count or status.



And, you can perform actions on all printers contained within a particular folder, such as pausing / resuming / purging, etc. The Network tab allows you to navigate directly to a specific printer in your network and manage it.

Document View

The Document View shows all of the documents for the selected printer(s). Documents can

easily be paused, restarted, deleted, etc. You can sort by any of the columns, ascending or descending. You can also customize the column layout by dragging-and-dropping the columns into any order you want.

Manual Redirect Print Jobs

Manually redirect print jobs with ease by dragging and dropping your files from one printer to another or set up APM (Automatic Print Management) to automatically redirect print jobs.

Automatic Print Management (APM)

APM allows print jobs to be moved quickly and easily between printers using the same driver type. A variety of options are available.

You can enable APM to work for all new jobs. This allows you to move all print jobs to another printer, or pause or delete those jobs. You can also copy print jobs to another printer or printers.

Print Broadcasting

The copy features in Print Queue Manager;s APM let you easily handle Print Broadcasting of print jobs.

Disaster Recovery

You can enable APM to function only when the printer is down or has an error. This gives you full disaster recovery with the option to move, copy, delete or pause all jobs on the problem printer.

Load Balancing

APM can also be used for load balancing. You can move jobs to another printer when a certain number of documents or a specific byte size has been reached.

Notifications and Alerts

If a print job are redirected to another printer, a pop-up message is sent to the user letting them know

that their print job has been moved. You can create your own default messages.

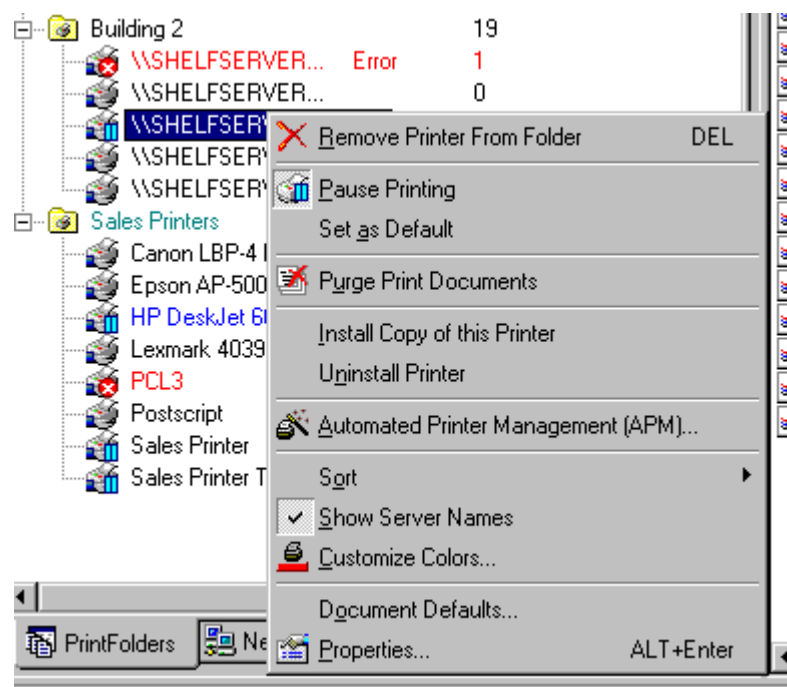
Administrator pop-up messages can be specifically sent to an Admin, Help Desk, or any machine on the network.

SNMP Traps have also been set up to handle:

- disaster recovery
- load balancing
- pop-up messages using the messaging service on NT/2000
- pop-up messages using winpopup on Windows 95/98

Print Queue Manager Remote Client Features

Print Queue Manager features a powerful client piece that can be run on NT/2000 Workstation.



You can fully operate the APM Service, drag-and-drop, redirect and many other features including:

- Remotely view all domain(s) printers
- Remotely view all printer print jobs
- Pause, restart, purge printers
- Pause, delete, resume, and restart print jobs
- View printer properties
- Add or edit local printer properties
- Install duplicate network printers
- View remote printer status
- View number of documents in printer queue

Customer Testimonial

I have been managing printers through the NT network print folder. It was going good until we had over 40 printers on the server and it started getting hectic to manage them.

I set out to look for a product and found Print Queue Manager, and tried the evaluation. What a blessing, we knew we had to have this now. I loaded it up and added all of my network printers to my print folder and was able to see all printers from one screen. This helped me see printers in error, and allowed me to handle the problems before we ever got a call.

I also started the APM (Automatic Print Management) feature for Printer Disaster Recovery. One day we had some printers go offline and Print Queue Manager automatically moved the jobs to other printers. This saved many, many, man-hours of work for us, and the users who had printed.

RL

Partial Customer List

Advanced Systems	JWAC
American Bar Association	K & S Systems LTD
Central Microsystems	Kennedy Space Flight Center
Ceridian Canada	Marion County Health Department
Cirque Du Soleil	Mexico Express Inc
CNS Computer Networks & Service GmbH	Mississippi Valley State University
Companq Computer Corp	Pellissippi State

Computer Intelligence Association
CSC Financial Service Group
CUH2A, Inc
Dana Comercial Credit
Danmarks Statistik
Delaware County Treasurer
Elks
Farallon Capitol
George Institute of Technology
Giffels Associates
Goepel And McDermid
HDR-Inc
IFTC
Interdata
Interface
Interpath Communications Inc.

Philips Industrial Activities
PMH Caramanning
Rebnord Technologies
Reming Information Systems
Roho Inc.
Siena College
Slack Incorporated
South East Health Care Corporation
Syncor Internatioanl
Syscom Technologies
Teacher's College, Columbia University
Texas Legislative Council
TravelCenters of America
Unco Data Systems
University of Houston
University of Southern California
University of Southern Queensland
Ville de Pierrefonds