

SECURITY EXPLORER FOR SQL SERVER

Security Explorer for SQL Server is a powerful, graphical solution that ensures access to privileged information is restricted, simplifies the overall management of permissions and significantly improves the security of SQL Server.

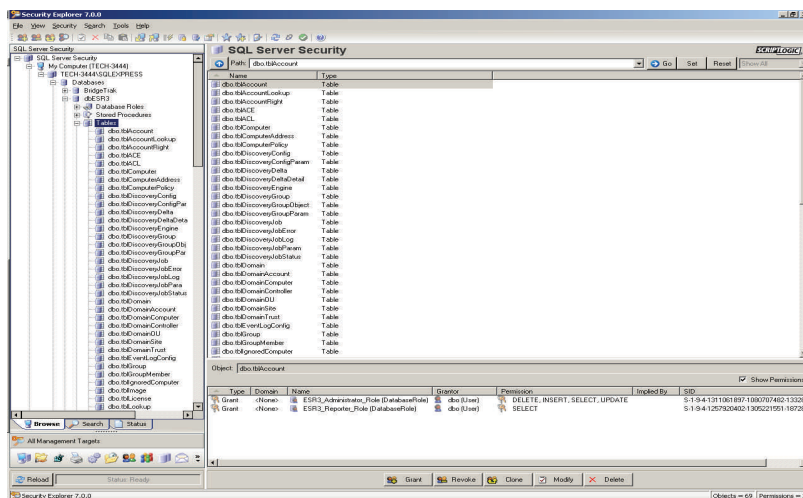
PROTECT YOUR DATABASES

Managing rights in SQL Server is a complex and manual process. Determining what permissions users have, and what access requirements each database application mandates can leave unexpected security holes in your database infrastructure.

Growing regulatory compliance requirements and the increasing number of network attacks from both inside and outside the corporate network make security management a critical part of overall database administration. Organizations need a comprehensive solution that allows them to gain granular control over their permission management on every SQL Server. The ability to clone permissions between logins and databases, find logins with blank or weak passwords and backup and restore those permissions are all vital aspects of a true, comprehensive solution that help to protect the integrity of SQL Server.

ScriptLogic's Security Explorer for SQL Server centralizes the management of SQL Server security and gives administrators the power to quickly assess, delegate, manage, and backup and recover permissions. Whether you're concerned with an upcoming audit, or just want to protect the security of your databases, Security Explorer for SQL Server can dramatically simplify your day-to-day management tasks, and significantly reduce the time needed to implement security standards across all SQL Server databases.

Security Explorer for SQL Server provides the ability to search, modify, delete, clone, backup and restore permissions with ease



POWERFUL, ROBUST YET SIMPLE PERMISSION

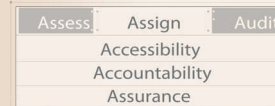
MANAGEMENT

- **Assess** any combination of user access rights across all instances of SQL Server
- **Manage** permissions to eliminate security weaknesses and over-exposed resources
- **Assign** permissions individually or in bulk
- **Clone** permissions between database users or roles
- **Demonstrate** compliance with the ability to enforce security and manage access controls
- **Recover** security information on databases whose permissions have been unintentionally/intentionally modified

Need to manage permissions and security across the ENTIRE Windows network? Also check out our:

- Security Explorer for File Servers
- Security Explorer for SharePoint
- Security Explorer for Exchange

SECURITY LIFECYCLE MAP



<http://www.scriptlogic.com/slm>

KEY BENEFITS

Increase Productivity

Get faster results and increase administrator availability with an intuitive, security focused interface, multi-threading and powerful search capabilities

Meet Compliance Objectives

Reduce the time needed to implement security standards on SQL Server database servers and easily recover from any out-of-compliance situation

Increase SQL Server Security Lock-down server resources and eliminate over-exposed databases

KEY FEATURES

Correct Vulnerable Logins

Find SQL Server logins with blank or weak passwords and then change those passwords individually, or in bulk

Search SQL Server Permissions

Rapidly scan for any combination of permissions granted to specific users, groups, or database roles. Find permissions that are either explicit or inherited.

Backup Permissions

Backup and instantly restore permissions to meet corporate policy and compliance objectives

Clone Permissions

Easily transfer permissions from one account to another on all objects in a database in one operation

SYSTEM REQUIREMENTS

Security Explorer for SQL Server supports SQL Server 2000/2005/SQL Server 2005 Express/MSDE

LICENSING

Security Explorer for SQL Server is licensed by the total number of SQL servers you wish to manage

For pricing, contact your ScriptLogic reseller or call ScriptLogic at 1.800.813.6415