

## VERITAS Backup Exec™ 10 for Windows Servers

THE GOLD STANDARD IN  
WINDOWS DATA PROTECTION

IT administrators require a reliable, easy to use, data protection solution that is cost effective and simple enough for the novice user to install and administer, yet flexible to protect large Windows environments, departmental workgroups, remote office environments and critical data on desktops and laptops. It must be scalable enough to grow from a single server into a multi-server storage area network (SAN). The ideal solution must back up more data with less hardware, in less time, with fewer resources, and be managed centrally.

**VERITAS Backup Exec™ 10 for Windows Servers** is the Gold Standard in Windows data protection. It provides comprehensive, cost effective, certified protection for Microsoft Windows server environments for disk or tape based backup and recovery. An easy to use, intuitive administration console consolidates product operations within a browser-like view and features easy-to-use wizards that simplify data protection and recovery procedures for any level user and any size network. Optional centralized administration simplifies the management of multiple local or distributed Backup Exec media servers and combines with high-performance add-on agents that support granular recovery of today's business critical messaging and database applications to quickly protect and restore desktop, laptop and server data and applications.

## INTRODUCING THE BACKUP EXEC SUITE

Designed to meet the evolving needs of today's businesses, VERITAS introduces the Backup Exec Suite. The Backup Exec Suite delivers an unprecedented, integrated solution that lets today's Windows-based organizations continuously protect and manage their business critical information. The suite is comprised of VERITAS Backup Exec, Replication Exec™ and Storage Exec™.

Key to this suite is the integration made possible through the **Backup Exec SmartLink Technology**. This integration enables you to immediately back up or archive data from Storage Exec reports using Backup Exec. Replication Exec integrates with Backup Exec letting you view job status and alerts of VERITAS Replication Exec in the Backup Exec console. For more information, please go to [www.backupexec.com](http://www.backupexec.com).

## KEY BENEFITS

- Simple to grow – simple to manage
- Fastest disk-based recovery
- Continuous backup protection for desktops and laptops
- Extends high performance protection to remote Linux servers
- Reduces operational cost in Microsoft Windows environments
- Increases Windows application availability
- Provides certified compatibility across Microsoft Windows 2000 and Windows 2003 Servers

## PRODUCT HIGHLIGHTS

- **NEW! Central Admin Server Option** – Simplifies and centralizes management and monitoring of multiple Backup Exec servers across a distributed network or in remote offices.
- **NEW! Multi-Staged Disk Backups** – Improves manageability of disk-based backups before moving them onto tape, supporting disk-to-disk-to-tape backup and restore strategies.
- **NEW! Advanced Disk-Based Backup Option** – Enables fastest backups and restores through advanced disk-based backup and recovery, including Synthetic and Off-Host backups to perform near zero impact backups and fast restores.
- **ENHANCED! Remote Agent for Linux/UNIX Servers** – Provides high performance network-wide data protection for 32 and 64-bit remote Linux and UNIX servers.
- **NEW! Microsoft SharePoint Portal Server 2003 Support** – Safeguards a SharePoint Portal Server 2001 and 2003 with online, fast and reliable data protection and granular recovery – including server farms.
- **NEW! Backup Exec SmartLink Technology** – Integrates VERITAS Replication Exec and Storage Exec functionality for improved, centralized administration.
- **ENHANCED! Desktop and Laptop Protection** – Provides continuous disk-based protection for users that are in the office or on the road. Automatically copy user data to existing network shares or storage, enabling quick recovery of data by the administrator or the user. Now features simplified deployment and support for Outlook 2003.
- **ENHANCED! Intelligent Disaster Recovery** – Saves time by eliminating the need to first reload the entire operating system of crashed servers. Protection is



now available for remote, LAN-based computers that use Intel 64-bit Itanium processors.

- **Fast Backup and Recovery for Exchange and Exchange Server 2003** – Reduces backup and restores with Single Instance Storage of message attachments, incremental/differential mailbox backups and individual public folder restore provide granularity and deliver faster backup and recovery of Exchange Servers. Now features integrated snapshot protection with consistency check leveraging Microsoft VSS technology to provide on-host or off-host backup from consistent snapshot image.
- **Windows Storage Server 2003 Support** – Transforms Microsoft Storage Server 2003 NAS appliances into a complete storage solution. Easily manage backups using the industry's only solution that integrates into the Storage Server 2003 web management console.
- **Support for Microsoft Volume Shadow Copy Service (VSS)** – Integrates with Microsoft's VSS writers to ease the protection and recovery of SQL Servers, Exchange Servers and SharePoint Team Services.

## Reliable

Backup Exec software is the ideal data protection solution for any type of Windows server environment. Its proven, innovative architecture fully incorporates Microsoft's design standards helping to ensure 100% compatibility with Microsoft's Windows Server operating systems. Backup Exec software is Microsoft certified for both Windows Server 2003 and Windows 2000.

Backup Exec includes tools that increase reliability through proactive management. For example, Job Test Run checks available tape capacity, credentials for systems being backed up and other criteria to identify potential problems that cause job failures, and then notifies the administrator so that corrective action can be taken. Realize further benefits by using Automatic Discovery of new resources, which enables administrators to create a job for detecting new, unprotected resources that are at risk and in need of backup.

## Self-Healing

The age of self-healing Backup Exec servers has arrived with the ability to now set the threshold at which Backup Exec fails the jobs that were stalled and then recovers them using customizable error-handling rules which specify the number of times that stalled/failed/recovered jobs are retried, and the interval between the retries.

Other reliability features include Cyclical Redundancy Check (CRC), Data Verify and Database Consistency Checking that assists in maintaining data integrity with high-speed verification.

## Easy To Use

VERITAS Backup Exec software's features are easy to use and deliver powerful functionality required for managing more complex networks. Backup Exec 10 simplifies management with the new Backup Exec Assistant, which provides easy access to commonly used features, such as Backup Exec's wizards, the job monitor, and job setup.

## Streamlined Installation

A new Environment Check utility checks if the media server has the proper system environment (operating system version, service packs, etc.) and checks 3<sup>rd</sup> party application versions required by Backup Exec. The Install process prompts administrators to answer key items prior to beginning installation.

## Simplified Operations

Managing backup jobs and strategies is simplified through policies. Policies contain job templates, which let you define how and when Backup Exec processes a job and specifies the devices and other settings.

Backup Exec 10 provides 45 standard reports that can be scheduled, emailed or saved as an HTML for better reporting and notification.

Color coded Job Logs present a job summary and enable easy identification of success or failure conditions, providing greater detail of job history without having to view the entire log.

Alert filtering, alert history and notification setup provide customizable views and settings. These features and many others available with Backup Exec software simplify the daily management of complex backup and recovery operations.

## Simple, Centralized Administration

Organizations looking to simplify and centralize management will benefit from the new Central Admin Server Option. This new option centralizes administration, job processing, and load balancing by transforming a stand-alone Backup Exec media server-based environment into a centrally managed data protection solution.

The Central Admin Server Option unifies independent Backup Exec media servers to provide one central point of administration and control. The Central Admin Server Option uses a state-of-the-art architecture, enabling users to:

- Manage data protection operations across multiple Backup Exec media servers
- Store catalogs, device and media information, policies, jobs and selection lists for entire Backup Exec environment

- Benefit from load balancing and fault tolerance ensuring resources are automatically protected by an available managed media server
- Monitor and report of all job activity on managed media servers
- Scale to handle future growth

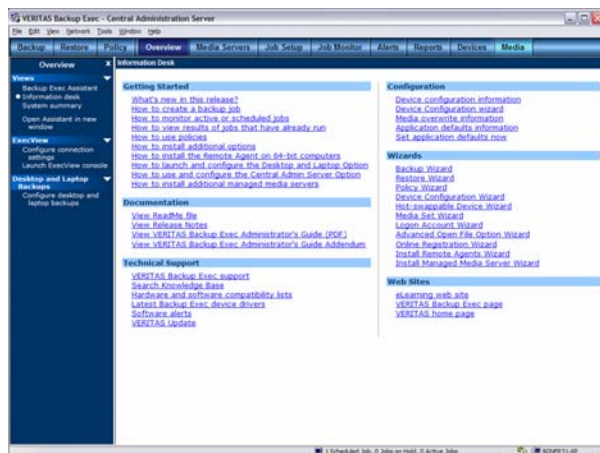
### Administration Consoles

Backup Exec software provides the industry's only web-based console that snaps into the web administration console on Microsoft Storage Server 2003 as well as Microsoft Server 2003, easing administration and providing single, centralized management in a browser environment.



The Backup Exec Web Administration Console provides web-based administration for servers running Windows Server 2003 and Windows Storage Server 2003 NAS appliances.

The standard graphical user interface provides a browser-based look and feel for ease of use and administration for novice and seasoned users alike.



Backup Exec's user interface helps ease installation, simplify backup and recovery administration and consolidate management operations to a single console.

### SIMPLIFIED SUPPORT WITH DIRECTASSIST

VERITAS DirectAssist is an innovative web-based support solution that makes it easier than ever for customers to support their Backup Exec for Windows Servers environment. They can easily diagnose and resolve many issues themselves; open and manage support cases; and securely communicate key diagnostic data directly to VERITAS Technical Support.

DirectAssist provides efficient, convenient troubleshooting and analysis of the VERITAS Backup Exec environment to significantly reduce the time to resolve your support needs. For more information, please visit <http://directassist.veritas.com>.

### FASTEST DISK-BASED RECOVERY

Backup Exec software continues to lead the industry by providing the fastest disk-based recovery. Backup Exec software has provided disk-based backup since its version 8.6, delivering improved backup performance with backup to disk using hard disks or removable media.

Now, the Advanced Disk-based Backup Option delivers the fastest backups and restores through Synthetic and Off-Host backups to perform near zero impact backups. Synthetic backups, also known as "incremental forever," reduce backup windows and network bandwidth requirements, by consolidating the incremental backups with the original full for rapid restore. The Off-Host backup feature enables better backup performance and frees the remote computer by processing the backup operation on a Backup Exec media server completely eliminating backup window concerns.

### MAXIMUM PERFORMANCE

The Backup Exec software architecture is designed to minimize network traffic and maximize throughput performance. The optional Remote Agents for Windows\*, NetWare\*, Linux\*, and UNIX\* servers use VERITAS' exclusive Agent Accelerator technology for distributed processing and source compression providing client access when protecting or restoring remote file and database servers.

Performance features and enhancements in this release of Backup Exec software include the ability to:

- Leverage high performance network backup of all Windows server platforms, including 64-bit remote systems.
- Multi-staging enables administrators to automatically copy single or multiple sets of data to disk and then archive to tape for true disaster recovery or data compliance requirements per predefined retention periods.

- Leverage Windows Change Journal integration and use the Windows modified time instead of relying on the archive bit – allowing incremental and differential backups to run faster by eliminating the need to perform larger, full backups.
- Reduce LAN traffic and enhance backup and recovery performance by selecting a Network Interface Card to reroute backup and restores to a secondary LAN on the network.
- Ensure all files on local and remote servers are protected even while in use. The Advanced Open File Option can use Microsoft Volume Snapshot Service (VSS) components on Windows Server 2003 or VERITAS Storage Foundation™ for Windows FlashSnap, providing alternate frozen image..
- Automate the complex recovery process for SQL Servers – VERITAS Intelligent Disaster Recovery Option uses copies of the Master and Model database to start SQL Server, allowing a single pass restore and eliminating the need to reinstall the SQL application. .

#### Disaster Recovery Protection

Proactive preparedness is the key to ensure that business-critical data is readily available in the event of a disaster.

With the Intelligent Disaster Recovery Option,\* VERITAS simplifies and automates the process of preparing for and recovering all data and system information from a “point-in-time” due to a disaster. Now featuring *Offline Protection*, so should a computer crash before disaster recovery media has been created, IDR can still recover the computer using a full backup made prior to the crash.

The Intelligent Disaster Recovery Option leverages Microsoft’s Automated System Recovery (ASR) functionality in Windows Server 2003 and Windows XP to provide disaster recovery on Windows servers.

#### Cluster-Aware Operation

Improve system fault tolerance by protecting highly available Microsoft Cluster Server (MSCS) machines with Backup Exec software. Failure of the primary server invokes Backup Exec software’s checkpoint-restart feature to automatically begin operating on a secondary node at the point of failure, redirecting the current job and remaining scheduled jobs to the secondary node in the cluster. Protection of clustered active-active applications is also supported. Backup Exec also supports VERITAS Cluster Server.

#### Advanced Device and Media Management (ADAMM)

Built-in media management and administration for Backup Exec software extends beyond just writing data to the media — ADAMM prevents accidental overwrite of data and automates the storage device operations. Adding the Library Expansion Option\* expands the Backup Exec software’s capabilities to multi-drive tape

library systems, which enables additional drives in a library to be accessed for expanding storage capacity.

By streamlining high-capacity backups with rule-based policies, jobs run concurrently and are automatically directed to the first available drive, resulting in optimized performance. The built-in wizards guide users through routine tasks such as device pooling, creating media sets and establishing Grandfather-Father-Son media rotation schemes. Other features include automatic media labeling, bar code reading, media statistics, device cleaning, user defined data retention periods, and catalogs displaying either volume or media-centric views.

#### Support for Emerging Storage Technologies

VERITAS addresses the increasing demand for high performance and scalability of storage applications by developing support for the latest storage technology. As new “storage appliances” are being released to capture the explosion of information on today’s growing networks, Backup Exec software has expanded its ability to recognize and protect file and database application data on native and emulated Windows NAS storage devices. The SAN Shared Storage Option\* enables LAN-free backup for Windows and NetWare servers over a fibre-channel or iSCSI network, helping to improve tape device sharing, reduce network traffic and increase backup speeds.

## AGENTS AND OPTIONS

A complete family of powerful agents and options deliver robust storage management tools to meet diverse application needs for growing and upgrading storage management capabilities, as well as protecting business critical information on desktops and laptops. Please refer to the VERITAS Backup Exec Agent and Option datasheet for more information at [www.backupexec.com](http://www.backupexec.com).

### BACKUP EXEC CERTIFICATION

The VERITAS Certified Professional Program offers the Certified Backup Exec Specialist Program. Certification enables individuals, and the companies who employ them, to increase their competitiveness with strategic and proven data protection and storage management skills and expertise. Organizations benefit from a qualified team of storage professionals that help lower operating costs and increase productivity.

This globally focused program is designed to ensure that VERITAS professionals possess consistent, high-performance, technical problem-solving skills. Visit [www.veritas.com/education](http://www.veritas.com/education) for more information.

FEATURES	BENEFITS
<b>Windows Compatibility</b>	
Support for Microsoft Windows Servers, including System State and Shadow Copy components	Microsoft certified support for Windows Server 2003 and Windows 2000 helps reduce costs, deployment time and ensure compatibility and reliability, protecting all operating system information including Active Directory of local or remote servers and workstations.
Full Windows File System Support	Windows 2000 and or Windows Server 2003 File System Support for FAT 16/32, VFAT, NTFS, CDFS, and UDF including Macintosh and POSIX file systems delivers maximum flexibility for diverse client support.
Cluster Configuration Wizard	Eases installation and configuration of Backup Exec in a Microsoft Cluster Server (MSCS) environment and provides automatic cascading failover for up to 8-node clusters and also protects clustered applications running on the Microsoft Cluster Server (MSCS).
Microsoft Tape Format Read/Write	Allows the interchange of media with the Windows Server backup applet.
<i>NEW!</i> Microsoft Operations Manager Support	Integrates with Microsoft Operations Manager can proactively monitor and manage Backup Exec servers through the Microsoft Operations Manager – Management Pack.
<b>Flexibility &amp; Ease of Use</b>	
Graphical User Interface / Administration Console	Provides a simple, intuitive browser-like console for ease of use, allowing customization of the columns, layout and type of information to be displayed.
<i>NEW!</i> Central Admin Server Option	Centralizes management and monitoring of multiple Backup Exec servers across a distributed network or in remote offices, centralizing administration, job processing, and load balancing.
<i>NEW!</i> Policies	Provide a simple, logical method for managing backup jobs and strategies. Policies contain job templates, which have job attributes that define how and when Backup Exec processes a job.
<i>NEW!</i> Remote Agent for Linux and UNIX servers	Provides high performance network-wide data protection for 32 and 64-bit remote Linux and UNIX servers.
<i>ENHANCED!</i> Desktop and Laptop Option	Simplifies desktop and laptop data protection with simplified deployment and support for Outlook 2003.
Support for Remote 64-bit Windows Systems	Provides high performance network backup of Intel 64-bit remote systems.
Support for Exchange Server 2003	Leverages Microsoft Exchange Server 2003 Volume Snapshot (VSS) technology enabling users to select either the VERITAS or the Microsoft proprietary snapshot technology for protecting open files.
Support for SQL 64-bit Servers	Delivers fast, dependable method for complete SQL Server protection on 32 or 64-bit servers.
Support for Microsoft Storage Server 2003	Transforms Microsoft Storage Server 2003 NAS appliances into a complete storage solution that is easy to manage and inexpensive to maintain. Integrates into the Microsoft web administration console.
<i>ENHANCED!</i> Support for Oracle 10g	Provides non-disruptive data protection for business-critical Oracle 10g, 9i, 8i, and 8.x databases
Task Wizards	Simplifies installation, setup, backup, recovery, media management, disaster preparation, cluster installation and agent configuration.
Backup via Specified Backup Network using Secondary NIC	Helps reduces LAN traffic by isolating backup and restore operations to a sub-network.
One-Button Backup	Speeds execution of a complete local system backup without having to define a backup job.
Outlook-style Calendar Based Job Scheduler	Simplifies job scheduling and management of backup operations.
<i>NEW!</i> Environment Check	Improves installations with new utility that runs before Backup Exec is installed and checks if the media server has the proper system environment (operating system version, service packs, etc.) and checks 3rd party application versions.
Job Retry	Automatically retries a failed job and reroutes jobs to alternate drives.
Automated Alert Notification and SNMP Support	Framework console notification via Microsoft Exchange, Lotus Notes or SMTP e-mail, pager, printer, net send broadcast, and network monitoring applications.
Cyclical Redundancy Check	Helps to ensure reliability with high-speed data verification.
<b>Advanced Device and Media Management</b>	
<i>NEW!</i> Advanced Disk-based Backup Option	Now offers fastest disk-based recovery, with Synthetic and Off-Host backups to perform zero impact backups and fast restores
Device Pooling, Cascading and Dynamic Load Balancing	Maximizes backup/restore performance and facilitates job failover.
Automated Media Management	Enables easy set-up of media formatting, labeling, tracking, rotation, defining of retention periods and catalog viewing.
Automated Log Files and Disk/Catalog Grooming	Frees hard disk space from inactive files.
Autoloader/Library Slot Partitioning	Allows backup jobs to be targeted to specific slots within a tape autoloader or library; mix drive types within a tape library.
System Summary Screen	Provides administrators with a central, consolidated view of the Backup Exec server status simplifying job management.
VERITAS Update	Checks the VERITAS website at user specified intervals for any available Backup Exec updates informing the user of the latest patches or hot fixes available.



# THE GOLD STANDARD IN WINDOWS DATA PROTECTION

## MINIMUM SYSTEM REQUIREMENTS

### Operating System:

- Microsoft Windows 2000 Server family
- Microsoft Windows Server 2003 family
- Microsoft Small Business Server 2003 Standard and Premium, Microsoft Small Business Server 2000
- Microsoft Windows Storage Server 2003 and Windows Powered SAK 2.0 or Higher NAS appliances

**Internet Browser** – Internet Explorer 6.0 or higher

**Processor** – Intel Pentium, Xeon, or compatible

### Memory:

Backup Exec Media Server

- Required: 256 MB RAM
- Recommended: 512 MB (or more for better performance)

Backup Exec CASO Server (may depend on number of media servers being supported)

- Required: 512 MB RAM
- Recommended: 1 GB

Note: RAM requirements may vary depending on operations performed, the options installed, and the specific system configuration.

### Virtual Memory Recommendations:

20 MB above Windows recommended size for total paging file size (total for all disk volumes)

### Disk Space:

350 MB (Typical Installation)  
550 MB (includes all options)

Note: Disk space requirements may vary depending on operations performed, the options installed, and the specific system configuration. Backup Exec Database and Catalogs will require additional space

### Other Hardware:

- Network interface card or a virtual network adapter card
- CD-ROM drive
- (Recommended) A mouse
- (Optional for printer notification) Requires a printer supported by Microsoft Windows

### VERITAS Software Corporation

Corporate Headquarters  
350 Ellis Street  
Mountain View, CA 94043  
650-527-8000 or 866-837-4827

### Storage Hardware

Backup Exec requires at least one storage media drive and/or single-drive robotic library. Removable storage devices and non-removable hard drives can also be targeted for backups. Refer to the Backup Exec hardware compatibility list <http://support.veritas.com/rd/bews-compatibility.htm> for a complete list of devices that are supported.

Note: Support for a single robotic library drive is available when you purchase Backup Exec. To enable support for additional robotic library drives, you must purchase Backup Exec Library Expansion Option. For a complete list of supported SCSI controllers, refer to the Windows Hardware Compatibility list at: [www.microsoft.com](http://www.microsoft.com)

### Application Support

Backup Exec Agents and Options support most major applications. Refer to the Backup Exec application compatibility list at <http://support.veritas.com/rd/bews-compatibility.htm> for a complete application support list.

### Supported Tape Formats

- Microsoft Tape Format v1.0 (read and write)
- Backup Exec for NetWare (read)
- CA ARCserve v6.x and ARCserve 2000 for Windows NT and Windows 2000 (read)
- CA ARCserve v4.x, 5.x and 6.x for NetWare (read)
- SMS/SIDF (read)

### Backup Exec 10.0 for Windows Servers

Backup Exec software installs on and protects Windows 2000 Professional, Windows 2000 Server, Windows 2000 Datacenter Server, Windows 2000 Advanced Server or Windows Server 2003 Family. Client protection includes remote Windows 98/ME, and Windows 2000 Professional and XP Professional machines, as well as Macintosh, UNIX, and Linux.

### Language

- Backup Exec 10 for Windows Servers – E/F/G/J/S/I/C/K
- Backup Exec 10 for Windows Small Business Server – E/F/G/I/J/S

\* Option/Agent sold separately

\*\*These options include a Remote Agent (CAL) for Windows Servers

For more information consult the Backup Exec Tech Support page at:

[http://www.veritas.com/be\\_support/www?cmd=landing&product\\_code=10](http://www.veritas.com/be_support/www?cmd=landing&product_code=10).